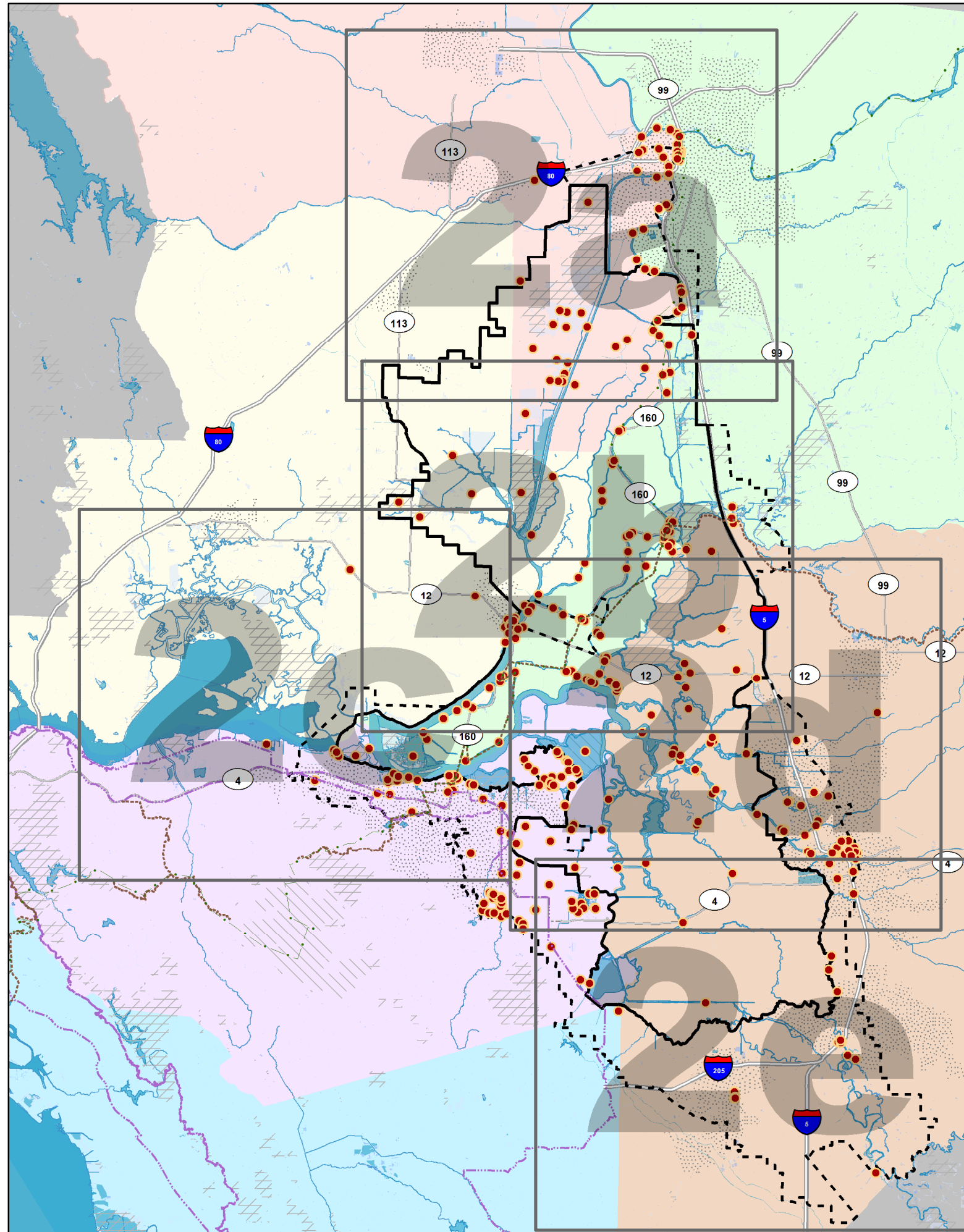


## MAP INDEX

- 1) Legal Delta Key Map
- 2) Recreation and Tourism Facilities Maps
  - a) North Delta
  - b) Central Delta
  - c) West Delta
  - d) East Delta
  - e) South Delta
- 3) Focus Areas
  - a) Old Sacramento/West Sacramento
  - b) Clarksburg/Lower Yolo Bypass
  - c) Walnut Grove/Locke
  - d) Rio Vista/Brannan
  - e) Delta Loop/Isleton
  - f) Sherman Island/Pittsburg/Antioch
  - g) Bethel Island-Oakley
  - h) Discovery Bay/Brentwood
  - i) Stockton

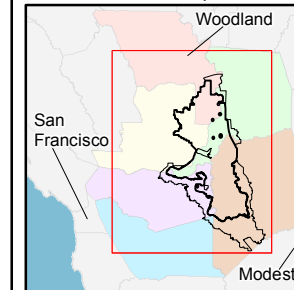


## SACRAMENTO-SAN JOAQUIN DELTA RECREATION & TOURISM INVENTORY

### LEGAL DELTA KEY

- |  |   |  |                     |
|--|---|--|---------------------|
|  | 2015 Site                                     |  | Alameda County      |
|  | City  |  | Contra Costa County |
|  | Protected Land                                |  | Sacramento County   |
|  | Park  |  | San Joaquin County  |
|  | River/Stream                                  |  | Solano County       |
|  | Freshwater Pond                               |  | Yolo County         |
|  | Freshwater Wetland                            |  | Delta Loop          |
|  | Bay/Lake/Riverine                             |  |                     |
|  | Delta Primary Zone                            |  |                     |
|  | Delta Secondary Zone                          |  |                     |
|  | Major Road (Interstate)                       |  |                     |
|  | Major Road (Highway)                          |  |                     |
|  | American Discovery Trail                      |  |                     |
|  | Mokelumne Coast to Crest Trail                |  |                     |
|  | Juan Bautista de Anza National Historic Trail |  |                     |

Map Location, showing the legal Sacramento-San Joaquin Delta Area



0 4.5 9 Miles

1 in = 7.371 miles

#### NOTES:

Boundaries, trail alignment and site locations are approximate. Maps are intended for study purposes only.

MAP  
1

California Department  
of Parks and Recreation

NORTHERN  
SERVICE  
CENTER

Date: 9/26/2016

