

AQUATIC INVASIVE PLANT CONTROL PROGRAM (AIPCP)



DPAC Meeting
August 1, 2023



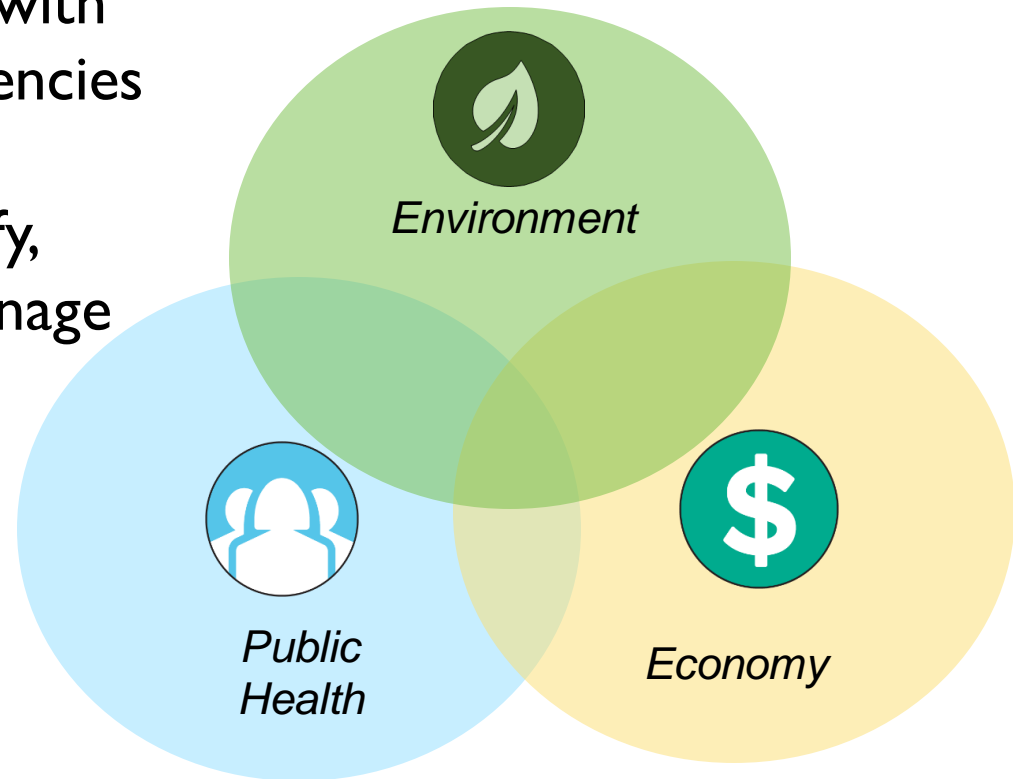
AIPCP History

- ▶ **Authorizing Legislation:**
 - ▶ **SB 1344 (1982) Water Hyacinth**
 - ▶ **AB 2193 (1996) *Egeria densa***
 - ▶ **AB 1540 (2012) Spongeplant**
 - ▶ **AB 763 (2013) Risk Assessment**
 - ▶ **SB 704 (2018) CA Conservation Corps Partnership**
- ▶ **Authorizing Statute:** Harbors and Navigation Code 64-64.5
- ▶ **Funding Source:** Harbors and Watercraft Revolving Fund
- ▶ **Annual Program Commitment:** \$10,300,000



AIPCP MISSION

- ▶ Lead Agency to cooperate with Local, State, and Federal agencies
- ▶ Purpose is to detect, identify, control, administer, and manage
- ▶ Eradication where possible
- ▶ Permissive program



TARGET SPECIES

- ▶ DBW is lead agency to cooperate with federal, state and local agencies to control:



Water Hyacinth (1983)



Brazilian Waterweed (2001)



Curlyleaf pondweed (2015)



South American Spongeplant (2013)



Coontail (2016)



Eurasian Watermilfoil (2016)



Uruguay Water Primrose (2016)



Carolina Fanwort (2017)



TARGET SPECIES (Continued)



**Alligatorweed
(2018)**



**Ribbon Weed
(2022)**



**DBW Responsibility Areas
Legal Delta
Suisun Marsh
Southern Tributaries**

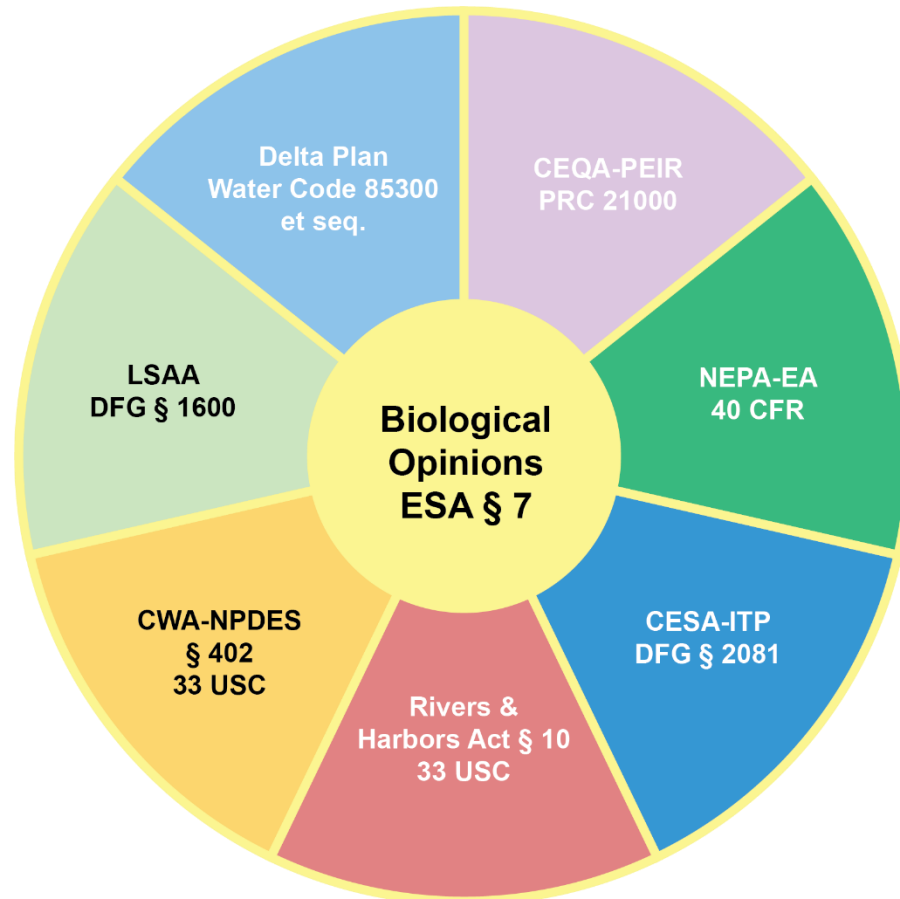


Department of Parks
and Recreation
Division of Boating
and Waterways

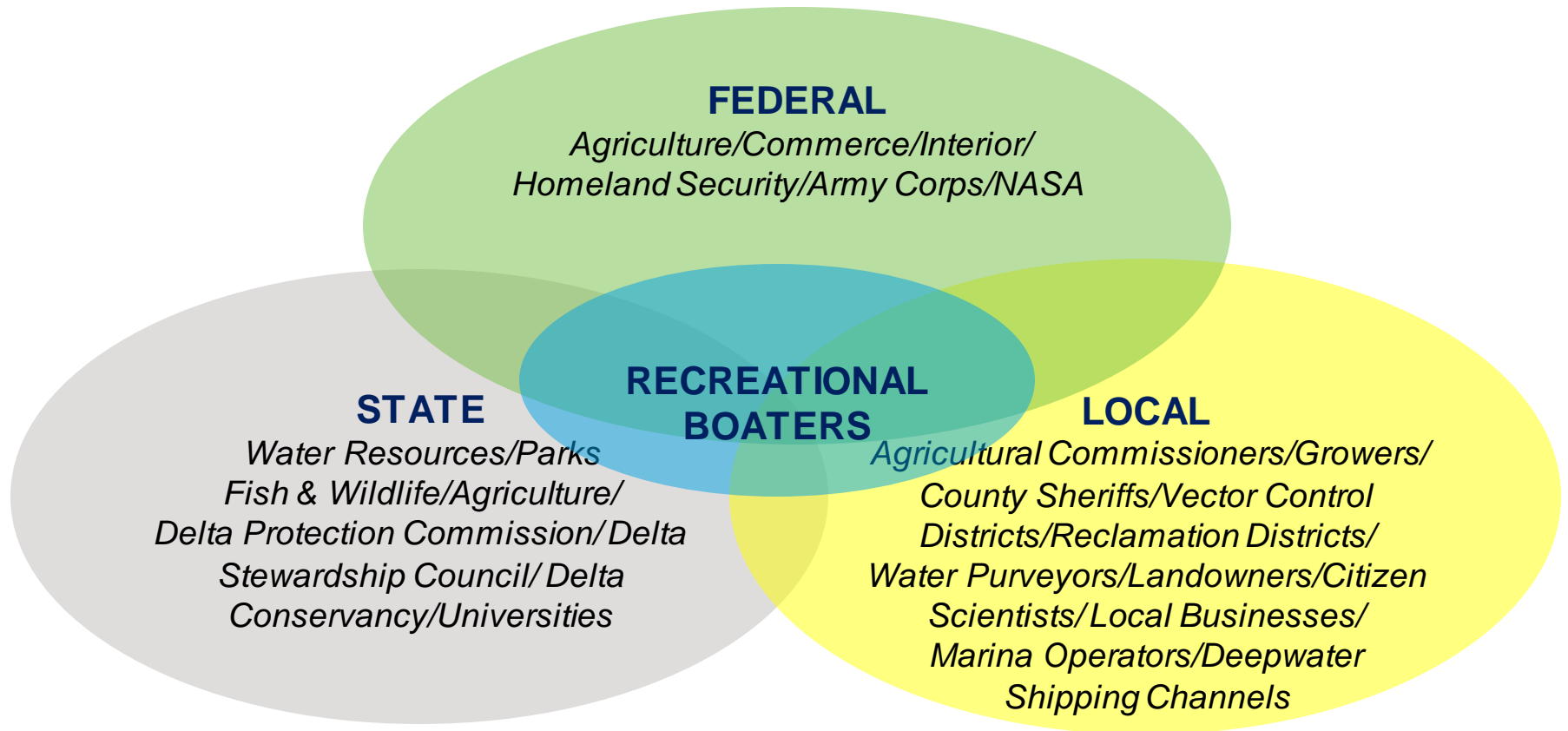
0 5 10
Miles

ENVIRONMENTAL COMPLIANCE

SPECIAL STATUS SPECIES / WATER QUALITY / BIO MONITORING



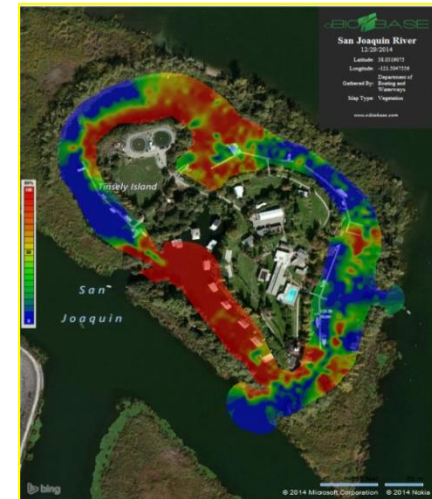
WHO BENEFITS?



INTEGRATED CONTROL STRATEGY

FLOATING AND SUBMERSED VEGETATION

- ▶ Herbicide Treatments
- ▶ Mechanical Harvesting
- ▶ *Biological Controls*
- ▶ Physical Removal
- ▶ *Physical Controls*



COLLABORATION SUCCESSES

- ▶ Collaborating with 17 member Interagency Ecological Program (IEP), Department of Water Resources, Department of Fish and Wildlife, U.S. Department of Agriculture
- ▶ Partnered with Department of Water Resources for the restoration of 8000 acres to aid the Fish Restoration Program
- ▶ Working with Corps of Engineers and Coast Guard for improved physical control methods
- ▶ Created Collaboration Guidelines for Delta Plant Control
- ▶ Collaboration with 11 counties in the program area



PROGRAM CHALLENGES

- ▶ Managing expectations for all stakeholders while meeting the program mission while adhering to regulatory requirements
- ▶ Environmental challenges, such as weather, water temperature and water flows make every year a different challenge
- ▶ Utilizing limited tools to manage very different aquatic invasive plants in 101,000 acres.



CONTACT INFORMATION



Jeffrey Caudill
Jeffrey.caudill@parks.ca.gov
916-531-4238

