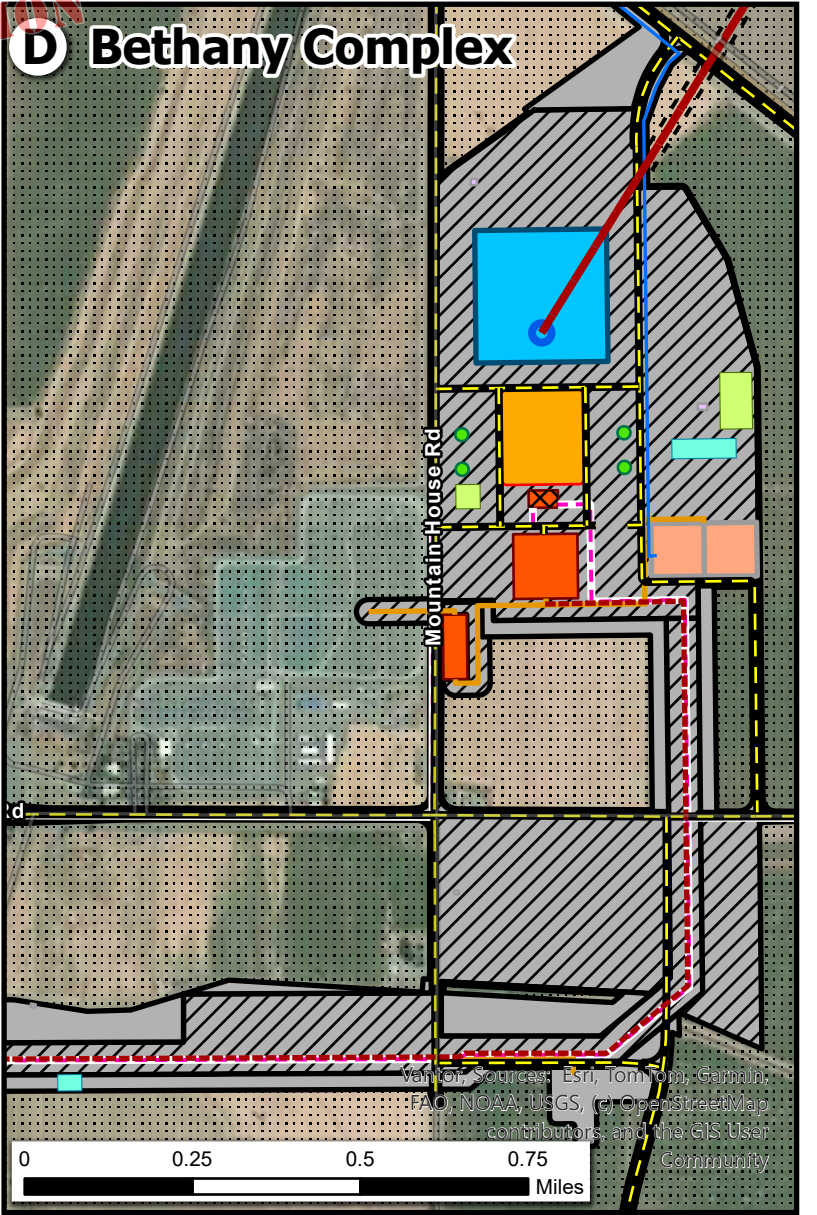
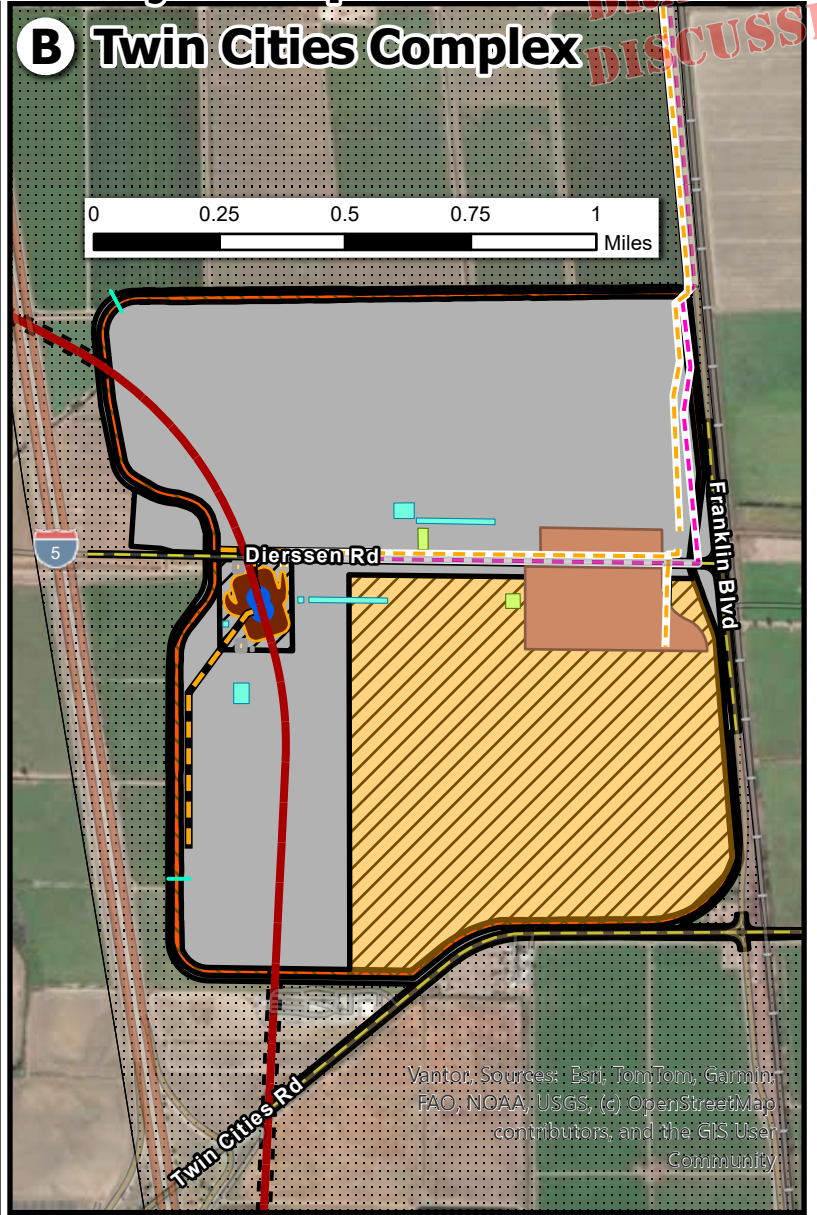
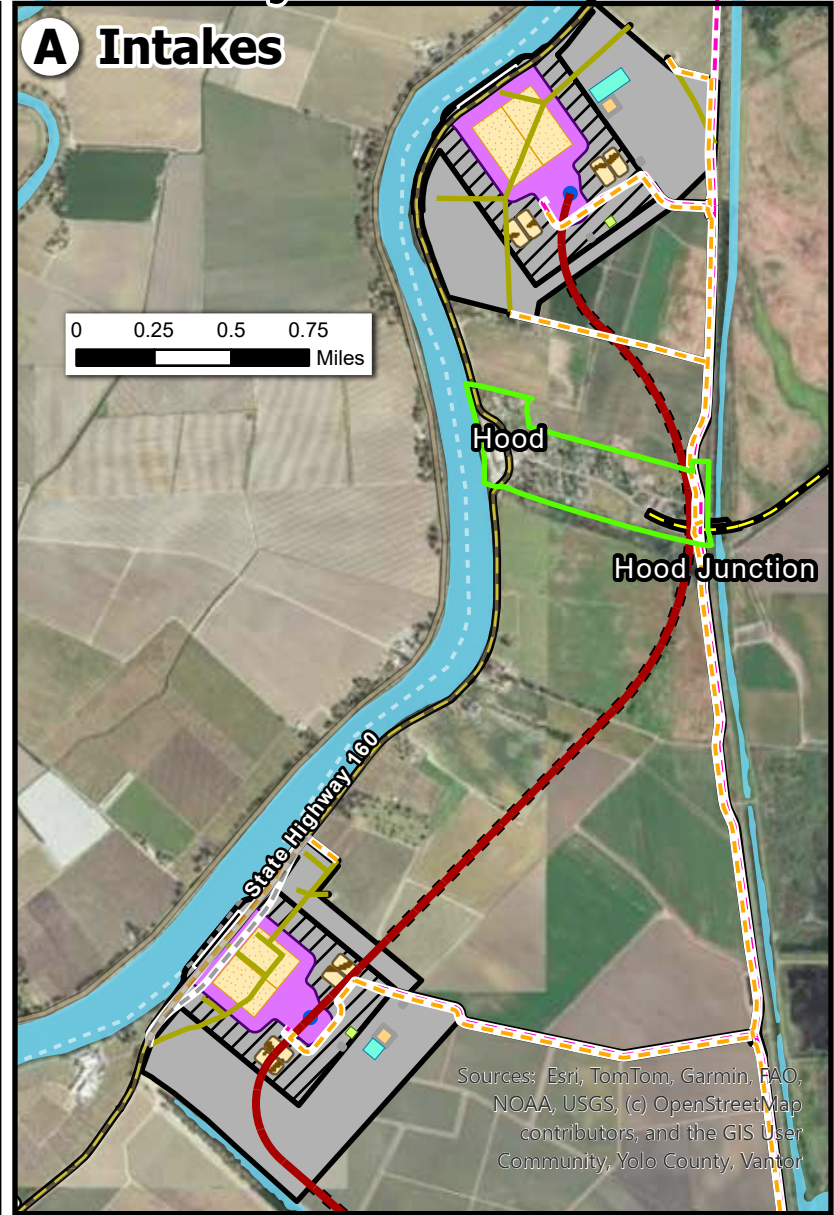
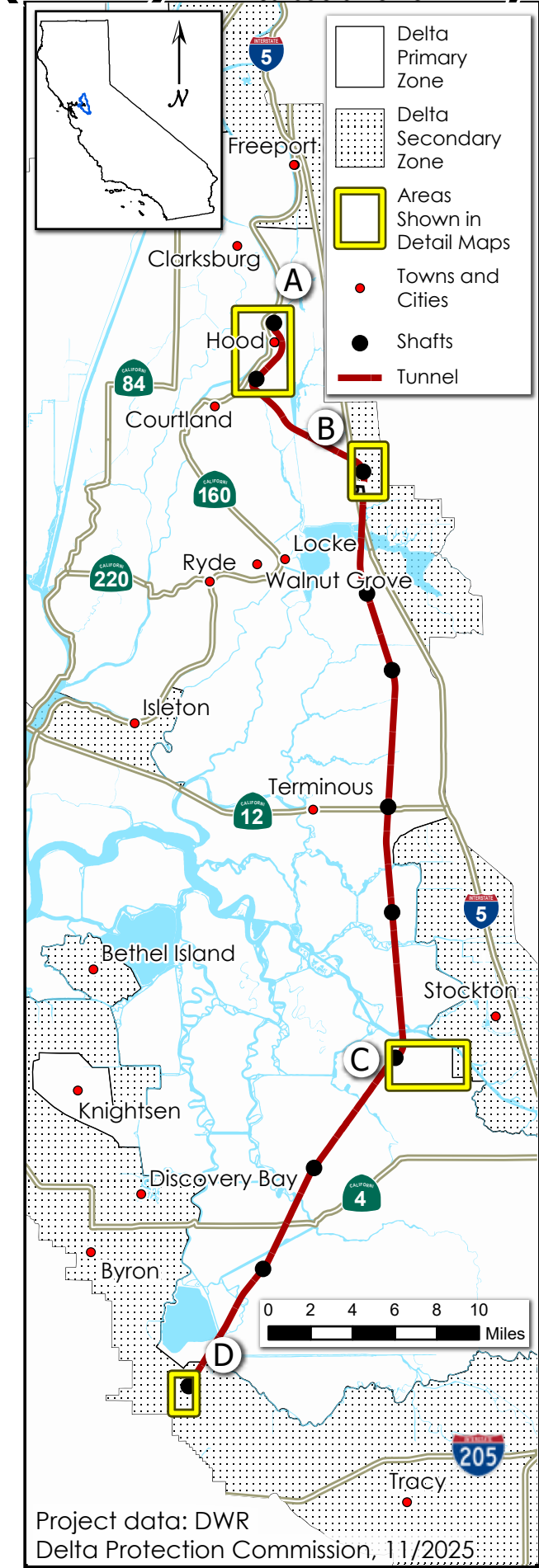


(Att. 2) Delta Conveyance Project: A Look at Four Major Impact Areas

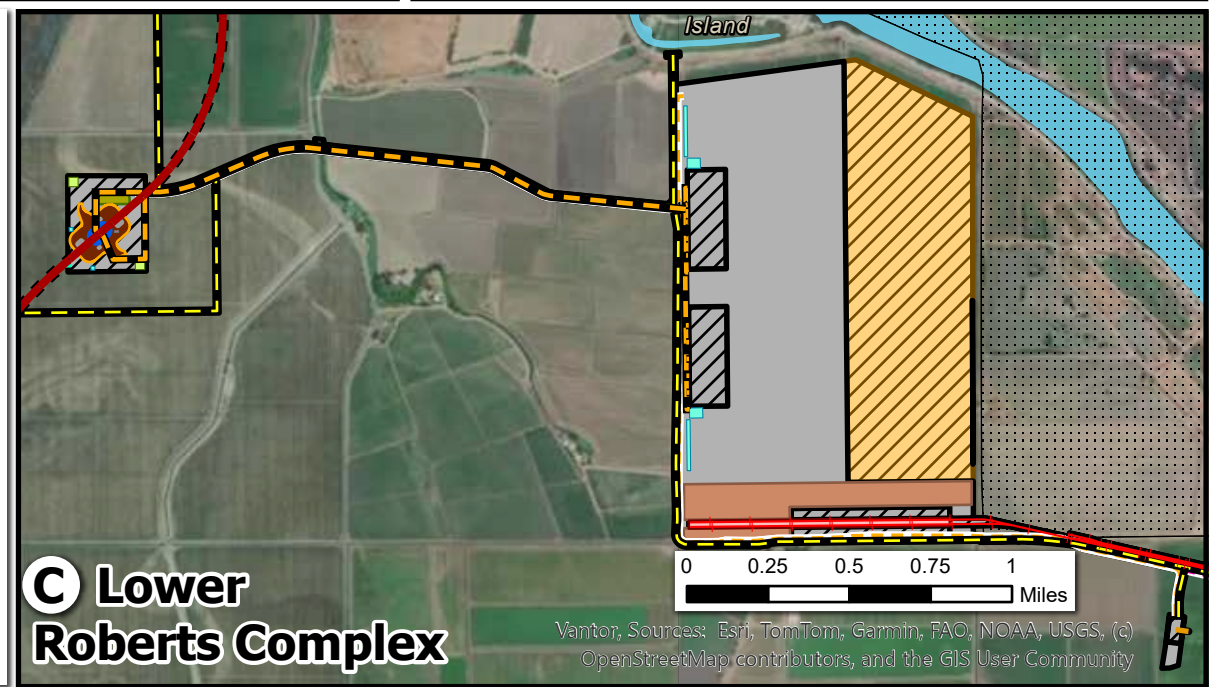
DRAFT FOR DISCUSSION

Some features may not be visible at this scale.



Impact Category	Project Feature	
Town of Hood	Batch Plant	Slurry/Grout Mixing Plant
Permanent Subsurface Impact	Concrete Batch Plant	Substation
Permanent Surface Impact	Electrical Building	Surge Basin
Temporary Subsurface Impact	Fuel Station	Surge Tank
Temporary Surface Impact	Fuel Storage	Topsoil Storage
<b>Power</b>	Intake Facility Grounds	Water Treatment & Storage Tanks
Abandoned	Intake Structure	RTM* and Ring Levee
Overhead - Permanent	Peat Storage	Ring Levee
Overhead - Temporary	Pumping Plant	RTM* Area
Underground - Permanent	Rail Depot	Road Improvement
Underground - Temporary	Sediment Drying Lagoon	Aqueduct
<b>SCADA (supervisory control and data acquisition)</b>	Sedimentation Basin	Construction Water Pipeline
Underground - Permanent	Septic System	RTM* Conveyor
	Shaft	Rail Spur
	Shaft Pad	Tunnel

\*RTM = Reusable Tunnel Material



# Delta Conveyance Project Intakes: Impacts, Context & Schedule

## IMPACTS

Scenic, productive farmland would be replaced with 232 acres of “visually discordant” “industrial-looking structures,” “large sediment basins,” “security fencing,” electrical substation, and more. Sediment basins and security lighting would cause glare. Part of scenic Hwy 160 would be relocated and elevated, and trees along it removed. (Quotes: project FEIR, Appendix 18D-3.)

★ Recreational & Historic Places

Town of Hood

### Impact Category

Permanent Subsurface Impact

Permanent Surface Impact

Temporary Subsurface Impact

Temporary Surface Impact

### SCADA Lines (supervisory control and data acquisition)

Underground - Permanent

### Power Lines

Abandoned

Underground - Permanent

### Project Feature

Fuel Station

Intake Facility Grounds

Intake Structure

Sediment Drying Lagoon

Sedimentation Basin

Septic System

Shaft

Slurry/Grout Mixing Plant

Water Treatment and Storage Tanks

New Road

Road Improvement

Tunnel

Farmland with outbuildings.  
Construction loss: 243 acres  
Permanent loss: 123 acres

## CONTEXT

The combined  $\geq 232$ -acre permanent footprint of intake facilities is the size of:

- 10 SMF Terminals A and B, or
- 12.6 avg. Amazon fulfillment centers†

Each 1,500-foot riverbank intake is the length of:

- 5 football fields, or
- 6 Delta Cross Channel gates

Sources: Esri, TomTom, Garmin, FAO, NOAA, USGS, (c) OpenStreetMap Contributors, and the GIS User Community, Yolo County, Vantor

Farmland and house.  
Construction loss: 242 acres  
Permanent loss: 109 acres

Popups show what's under facility shapes

## HOOD CONSTRUCTION SCHEDULE

YEAR	1	2	3	4	5	6	7	8	9	10	11	12	13
WORK													

0 0.25 0.5 0.75 1 Miles

Project data from DWR

Delta Protection Commission, 11/2025

Features in legend are on map; some may not be visible at this scale

1800,000 square feet/18.4 acres

# Delta Conveyance Project – Twin Cities Complex: Impacts, Context & Schedule

## IMPACTS

Productive farm and pasturelands would be replaced with reusable tunnel material area, access roads, railways, shafts, shaft pads, and industrial-looking equipment, which “would introduce large-scale industrial-looking features and prominent elevated landforms to a landscape that is currently predominantly flat. These features would be visually discordant with the area’s existing characteristics.” (Quote: project FEIR, Appendix 18D-3.)

The “reusable tunnel material area” is a stockpile with an indefinite lifespan, because there is no plan for dispersing it.

- Delta - Primary Zone
- Delta - Secondary
- Outside of Delta

### Impact Category

- Permanent Subsurface Impact
- Permanent Surface Impact
- Temporary Surface Impact

### SCADA Lines

(supervisory control and data acquisition)

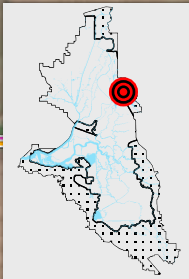
- Underground - Permanent

### Power Lines

- Overhead - permanent
- Underground - Permanent

### Project Feature

- Concrete Batch
- Fuel Storage
- Septic System
- Shaft
- Shaft Pad
- Slurry/Grout Mixing
- Topsoil Storage
- Water Treatment and Storage Tanks
- Reusable Tunnel Material and Ring
- Ring Levee
- Reusable Tunnel Material Area
- Road
- Improvement
- Reusable Tunnel Material Conveyor
- Runoff Discharge
- Tunnel



## CONTEXT

The combined  $\geq 235$ -acre permanent footprint of Twin Cities Complex facilities is the size of:

- 10.5 SMF Terminals A and B, or
- 13.3 avg. Amazon fulfillment centers†

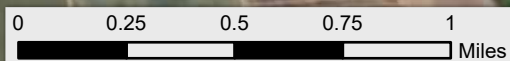
Dierksen Rd

Vantor, Sources: Esri, TomTom, Garmin, FAO, NOAA, USGS, (c) OpenStreetMap contributors, and the GIS User Community

## TWIN CITIES CONSTRUCTION SCHEDULE\*



\*Concrete batch plants will run all 13 years



Point Pleasant

Lourence Rd

Lambert Rd

Dierksen Rd

Dierksen Rd

Dierksen Rd

Dierksen Rd

Dierksen Rd

Dierksen Rd

Dierksen Rd

Dierksen Rd

Dierksen Rd

Dierksen Rd

Dierksen Rd

Dierksen Rd

Dierksen Rd

Dierksen Rd

Dierksen Rd

Dierksen Rd

Dierksen Rd

Dierksen Rd

Farmland.

Construction loss: 15.3 acres  
Permanent loss: 14 acres

Farmland and two houses.

Construction loss: 591 acres  
Permanent loss: 231 acres

Project data from DWR  
Delta Protection Commission, November 2025

Features in the legend are on the map; some may not be visible at this scale

1800,000 square feet/18.4 acres

# Delta Conveyance Project – Lower Roberts: Impacts, Context & Schedule

## IMPACTS

Expansive views of flat, large agricultural areas – including mature ornamental tree groupings, row crops, and orchards - would be interrupted with “elevated landforms and industrial-looking structures,” reusable tunnel material areas, shaft site and rail bridge. (Quotes: project EIR, Appendix 18D-3.) Recreation impacts on three marinas during construction.

The “reusable tunnel material area” is a stockpile with an indefinite lifespan, because there is no plan for dispersing it.

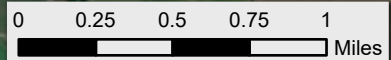
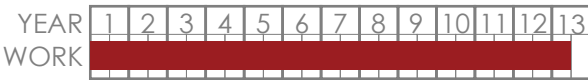
## CONTEXT

The combined ≥277-acre permanent footprint of Lower Roberts facilities is the size of:

- 11.9 SMF Terminals A and B, or
- 15.1 avg. Amazon fulfillment centers†

Farmland and two houses.  
Construction loss: 552 acres  
Permanent loss: 277 acres

## LOWER ROBERTS CONSTRUCTION SCHEDULE



Delta - Primary Zone

Delta - Secondary Zone

Recreational Places

Permanent Subsurface Impact

Permanent Surface Impact

Temporary Surface Impact

Underground - Permanent

Overhead - Permanent

Underground - Permanent

Batch Plant

Fuel Storage

Peat Storage

Rail Depot

Septic System

Shaft

Shaft Pad

Slurry/Grout Mixing Plant

Topsoil Storage

Water Treatment and Storage Tanks

Reusable Tunnel Material Area

Levee Improvement Area

New Road

Road Improvement

Reusable Tunnel

Material Conveyor

Rail Spur

Runoff Discharge Pipe

Tunnel

Source: Esri, TomTom, Garmin, FAO, NOAA, USGS, c) OpenStreetMap contributors, and the GIS User Community

1800,000 square feet/18.4 acres

Delta Conveyance Project – Bethany Complex:

Impacts, Context & Schedule

IMPACTS

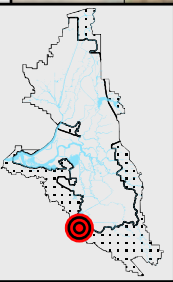
“Proposed surge basin, pumping plant, substation, surge tanks, canopy structures, water treatment and storage tanks, and mounded aqueduct pipeline south of Clifton Court Forebay would considerably alter character of area through introduction of a waterbody into view from Byron Highway and Mountain House Road. ... The substation would be highly visible, increasing the number of industrial-looking features and utilities in the landscape. The realigned Byron Highway and associated facility access roads would increase the amount of roadway infrastructure seen in views, including the addition of new bridges.” (Quote: project EIR, Appendix 18D-3.)

Recreation impacts at Bethany Reservoir SRA and California Aqueduct Bikeway (including bikeway access) during construction (years 1, 4-10, and 13), and permanent impacts on viewshed.

CONTEXT

The combined ≥241-acre permanent footprint of Bethany facilities in the Delta is the size of:

- 10.3 SMF Terminals A and B, or
- 13.1 avg. Amazon fulfillment centers†



Project data from DWR;  
Delta Protection Commission, November 2025  
Features in the legend are on the map; some may not be visible at this scale.

Delta - Primary Zone

Delta - Secondary Zone

Outside of Delta

Recreational and Community Places

California Aqueduct Bikeway

ImpactCategory

Permanent Subsurface Impact

Permanent Surface Impact

Temporary Surface Impact

SCADA Lines (supervisory control & data acquisition)

Underground - Permanent

Power Lines

Overhead - Permanent

Overhead - Temporary

Project Feature

Concrete Batch Plant

Discharge Structure

Electrical Building

Fuel Storage

Pumping Plant

Septic System

Shaft

Substation

Surge Basin

Surge Tank

Water Treatment and Storage Tanks

New Road

Road Improvement

Aqueduct

Construction Water Pipeline

Runoff Discharge Pipe

Tunnel

